



EVERLAST
®

BOXING & MMA

ELITE
EVERLAST

BOXING EQUIPMENT
EVERLAST
ST.1910
WORLDWIDE





1910 PRO SPARRING LACED TRAINING GLOVES

Ventilated palm improves air flow and comfort.
 Laser etched detailing.
 Genuine leather construction.
 Elevated take on a legendary glove.
 Padding and lush cushion interior.

BLACK SKU: P00001675 14oz SKU: P00001676 16oz

1910 CLASSIC TRAINING GLOVES (VELCRO)

Pro quality at retail price.
 Ventilated palm improves air flow and comfort.
 Laser etched detailing.
 Genuine leather construction.
 Classic construction with a modern fit.

BROWN SKU: P00002501 12oz SKU: P00002502 14oz SKU: P00002503 16oz
 BLACK SKU: P00001709 12oz SKU: P00001711 14oz SKU: P00001713 16oz
 BLUE SKU: P00001698 16oz
 WHITE SKU: P00001705 12oz SKU: P00001710 14oz SKU: P00001712 16oz



1910 CLASSIC BOXING GLOVES

Boxing glove with a classic appearance, designed for entry level boxers.

DESIGN FEATURES:

- Triple-layer foam provides protection and comfort
- Antibacterial satin lining for easy cleaning and performance
- Ergonomic grip bar and secured thumb forces hand into ideal fist position, aligning bones to prevent injury
- Full wrist-wrap hook-and-loop enclosure for secure and customizable fit

BLACK SKU: P00003349 14oz SKU: P00003350 16oz
 BROWN SKU: P00003345 14oz SKU: P00003346 16oz



TRAINING GLOVES



POWERLOCK2 TRAINING GLOVES

Synthetic PU Leather ensuring long-lasting durability and performance.
 Quad Layered Foam Core provides mid level impact absorption.
 Ergonomic Grip bar enables proper fist position while striking to prevent injuries.
 Full Mesh Palm for maximum temperature control during intense workouts.
 "Turnback" Hook&Loop Enclosure provides a fully adjustability wrist strap with maximum support.
 Ergonomically secured thumb helps protect and prevent injuries.
 Polyester foam interior lining for an extremely comfortable fit and feel.

A) BLACK	SKU: P00002284	12oz	SKU: P00002285	14oz	SKU: P00002286	16oz
B) WHITE	SKU: P00002289	12oz	SKU: P00002290	14oz		
C) CHARCOAL	SKU: P00002305	12oz	SKU: P00002306	14oz	SKU: P00002307	16oz
D) RED	SKU: P00002310	12oz	SKU: P00002311	14oz	SKU: P00002312	16oz
E) NEON YELLOW	SKU: P00002315	12oz				
F) PURPLE	SKU: P00002320	12oz				

Technologies: **POWERLOCK**

POWERLOCK LEATHER BOXING SPEED BAG

Specifically engineered shape gives true and accurate rebounding
 Reinforced seams and loops offer flexibility during use without breaking
 Extra durable leather shell and latex bladder
 Materials: Premium grade leather shell with latex bladder

SKU: P00002723 Color: Black

Technologies: **POWERLOCK**



POWERLOCK COACH EQUIPMENT



POWERLOCK PRO FOCUS MITTS

Full Grain Leather With Curved Design And Raised Pocket For Impact Control During Training
Adjustable Turnback Hook & Loop Strap System Provides An Adjustable Secure Fit
Foam Filled Finger Cover For Maximum Protection
Perforated Leather Mitt Section For Improved Temperature Control And Breathability.
Ergonomic Position Grip Ball And Wrist Pad For Maximum Comfort And Performance.

SKU: P00003068 Color: Red
SKU: P00003069 Color: Neon Yellow

Technologies: POWERLOCK



POWERLOCK PRO HEADGEAR

Low profile foam construction for an unintrusive and lightweight design.
Raised exterior foam panel to help with impact deflection.
Three point hook & loop turnback strap system for maximum adjustability.
Attached rear pad for added comfort and protection.
Strap intergrated ear guards and full side foam design provide maximum ear protection.

SKU: P00003171 Color: Black

Technologies: POWERLOCK

TRAINING GLOVES

EVERLAST

PROTEX BOXING GLOVE



New innovative boxing glove that gives you the fit and feel of a lace glove with the ease of function of a hook & loop glove.

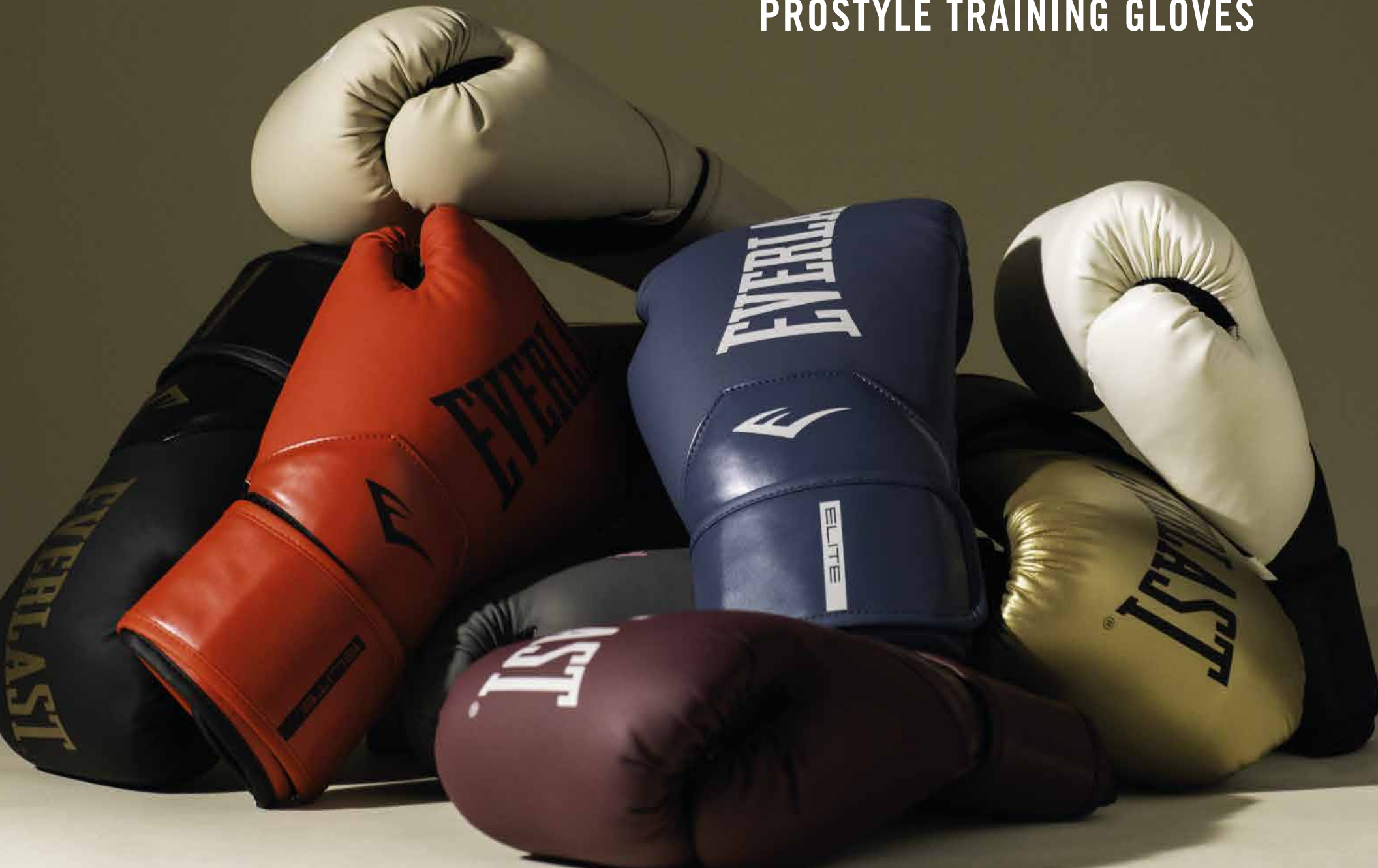
Size(s): 12oz, 16oz

- Wrap around cuff provides additional wrist support
- New construction to reduce injuries
- Full pu palm and microfiber pu on the impact surface for increased durability and longevity
- Ergonomic grip bar, attached thumb, injection molded foam provides maximum protection and impact absorption to reduce injuries
- Hybrid lace and strap closure system that provides lace like support but with the ease of use of the hook and loop systems

SKU: **P00003363** 12oz
SKU: **P00003364** 16oz

ELITE

PROSTYLE TRAINING GLOVES



TRAINING GLOVES



ELITE 2 BOXING GLOVES

The Everlast Elite 2 boxing gloves are the ultimate choice for fighters and trainers looking for maximum support and protection. Featuring a wedge-shaped full-length hook and loop strap for a secure fit, and an integrated palm foam section for increased protection, these gloves are designed to take your training to the next level. The triple-layer foam combination provides mid-level impact absorption, while the Evercool mesh palm increases ventilation to keep your hands cool and dry. The splint-style foam combination offers elite wrist support to prevent injuries, and the raised cuff panel deflects strikes during blocking. With an ergonomically correct foam grip bar and attached thumb, and a soft touch polyester lining for added comfort, the everlast elite 2 boxing gloves are the ultimate training companion.

FEATURES

- Wedge-shaped full-length hook and loop strap for a secure fit.
- Integrated palm foam section for increased protection and support.
- Triple-layer foam combination for mid-level impact absorption.
- Evercool mesh palm for ventilation and temperature control.
- Splint-style foam combination for elite wrist support and injury prevention.
- Raised cuff panel for added wrist support and strike deflection during blocking.
- Ergonomically correct foam grip bar and attached thumb for injury prevention.

TRAINING GLOVES



ELITE 2 BOXING GLOVES

- A) **SKU:** P00003269 8oz BLACK/GOLD
SKU: P00003270 10oz BLACK/GOLD
SKU: P00003271 12oz BLACK/GOLD
SKU: P00003272 14oz BLACK/GOLD
SKU: P00003273 16oz BLACK/GOLD

- B) **SKU:** P00003275 10oz WHITE/BLACK
SKU: P00003276 12oz WHITE/BLACK
SKU: P00003277 14oz WHITE/BLACK
SKU: P00003278 16oz WHITE/BLACK

- C) **SKU:** P00003280 10oz RED
SKU: P00003281 12oz RED
SKU: P00003282 14oz RED
SKU: P00003283 16oz RED

- D) **SKU:** P00003290 10oz GOLD/BLACK
SKU: P00003291 12oz GOLD/BLACK
SKU: P00003292 14oz GOLD/BLACK

- E) **SKU:** P00SM3195-10 10oz NAVY/PINK
SKU: P00SM3195-12 12oz NAVY/PINK
SKU: P00SM3195-14 14oz NAVY/PINK

- F) **SKU:** P00SM3196-08 8oz PINK/WHITE
SKU: P00SM3196-10 10oz PINK/WHITE
SKU: P00SM3196-12 12oz PINK/WHITE
SKU: P00SM3196-14 14oz PINK/WHITE

- G) **SKU:** P00003285 10oz NAVY
SKU: P00003286 12oz NAVY
SKU: P00003287 14oz NAVY
SKU: P00003288 16oz NAVY

- H) **SKU:** P00003315 10oz NUDE
SKU: P00003316 12oz NUDE

- I) **SKU:** P00003300 10oz PURPLE
SKU: P00003301 12oz PURPLE

- J) **SKU:** P00003310 10oz GREY/PINK
SKU: P00003311 12oz GREY/PINK



ELITE 2 MICRO MITTS

SKU: P00003330

TRAINING GLOVES



A)



B)



ELITE PRO STYLE TRAINING GLOVES

Premium synthetic leather combined with excellent construction provides lasting durability.

Full mesh palm ensures breathability and comfort.

Updated EVERSIELD™ design for advanced wrist protection.

Secure fit maintains protection and comfort during a variety of striking angles.

C)



D)



A) BLACK	SKU: P00002359	08oz	SKU: P00002361	12oz	
	SKU: P00002362	14oz			
B) GREY	SKU: P00002356	12oz	SKU: P00002357	14oz	
C) GOLD	SKU: P00002349	08oz	SKU: P00002350	10oz	SKU: P00002351 12oz
	SKU: P00002352	14oz	SKU: P00002353	16oz	
D) NAVY	SKU: P00002331	12oz	SKU: P00002332	14oz	
E) MILITARY GREEN	SKU: P00002341	12oz	SKU: P00002342	14oz	SKU: P00002343 16oz
F) FLAME RED	SKU: P00002335	10oz	SKU: P00002336	12oz	SKU: P00002337 14oz
	SKU: P00002338	16oz			

E)



F)



Technologies: EVERSIELD™ EVERLASTWSD™ EVERCOOL™

TRAINING GLOVES



ELITE TRAINING GLOVES

Premium synthetic leather combined with excellent construction provides lasting durability.
Full mesh palm ensures breathability and comfort.
Updated EVERSIELD™ design for advanced wrist protection.
Secure fit maintains protection and comfort during a variety of striking angles.



G) WINE **SKU: P00002344 08oz** **SKU: P00002345 10oz** **SKU: P00002348 16oz**

H) PINK **SKU: P00001244 08oz** **SKU: P00001196 12oz** **SKU: P00SM14PK 14oz**



I) NAVY PINK **SKU: P00SM10NA 10oz** **SKU: P00001195 12oz** **SKU: P00SM14NA 14oz**

Technologies: **EVERSHIELD™** **EVERLASTWSD™**
EVERCOOL™

TRAINING GLOVES



ELITE CARDIO BOXING GLOVES

DESCRIPTION

The Everlast Elite Cardio Boxing Gloves are designed for speed-style training and target control. They feature a full wrist wrap strap for a secure fit and an open thumb design for proper fist positioning. These gloves offer a dual-layer foam combination for a balance of lightweight and protection, and are suitable for use on heavy bags and mitt work. However, they are not recommended for sparring. The gloves also have an integrated grip bar to help prevent injuries during training, and a full mesh palm for temperature control and breathability.

Dual-layer foam combination for lightweight protection

Full wrist wrap strap for secure fit

Open thumb design for proper fist position

Integrated grip bar for injury prevention during training

Full mesh palm for temperature control and breathability

SKU: P00003319 S-M BLACK/GOLD

SKU: P00003320 L-XL BLACK/GOLD

SKU: P00003321 S-M WHITE/BLACK

SKU: P00003322 L-XL WHITE/BLACK



POWERLOCK2 TRAINING GLOVES

Synthetic PU Leather ensuring long-lasting durability and performance.

Quad Layered Foam Core provides mid level impact absorption.

Ergonomic Grip bar enables proper fist position while striking to prevent injuries.

Full Mesh Palm for maximum temperature control during intense workouts.

“Turnback” Hook&Loop Enclosure provides a fully adjustability wrist strap with maximum support.

Ergonomically secured thumb helps protect and prevent injuries.

Polyester foam interior lining for an extremely comfortable fit and feel.

BLACK / GOLD

P00002661 **10OZ**

P00002662 **12OZ**

P00002664 **14OZ**

P00002665 **16OZ**

WHITE / GOLD

P00003048 **10OZ**

P00003049 **12OZ**

P00003050 **14OZ**

P00003051 **16OZ**



CORE TRAINING GLOVES

Synthetic PVC leather ensuring long lasting durability and performance at a great price. Light weight dual layered foam provides you with the protection needed while learning the basics of boxing without weighing your hands down.

Ergonomic grip bar enables the proper fist position while striking to prevent injuries.

Ful lwrst-wrap hook & loop enclosure provides a secure and customizable fit.

Ergonomically secured thumb helps protect and prevent injuries.

Polyester/nylon blended interior lining makes for easy cleaning and maintenance.



SKU: P00002325 S/M SKU: P00002326 L/XL WHITE

SKU: P00002327 S/M SKU: P00002328 L/XL BLACK



CORE

START YOUR JOURNEY



BOXING GLOVES CORE

Full mesh palmen sures breathability and comfort.

Anti-microbial treatment fights offensive odors and bacterial growth, keeping your products safe and smelling fresh. Premium neoprene material combined with superior glove construction provides lasting durability and functionality. Lightweight design offers speed and power. Ideal formitt work,heavy bagworkouts,and reflex bagworkout

Technologies: **EVERGEL™**

SKU: P00002674



GLOVES COACH CORE

Moisture-absorbing and antimicrobial lining retains freshness and fights bacterial growth extending the life of your boxing equipment. Mesh back ensures breathability and comfort, Mantis shape and padded wrist support provide superior hand safety and comfort, Mantis Punching Mitts are used primarily for coaching and mitt work.

SKU: P00002673



CORE HEAD GEAR

Head protector with cheek protection, resists moisture while providing optimal resistance. The lightweight foam provides a perfect balance between protection and mobility. Secure fit, easy to put on and take off.

SKU: P00002676



SPARK 'SPECIAL EDITION' TRAINING GLOVES

'SPECIAL EDITION' ANIMAL PRINT COLORWAYS.
THE UPPER SECTION OF THESE GLOVES USE A SUEDE PU WITH PRINTED GRAPHICS TO GIVE THE GLOVE A SOFT FEELING.

SIZE(S): 10oz, 12oz, 14oz, 16oz

DESIGN FEATURES:

- Made of premium synthetic leather and suede for optimal durability.
- Injection molded foam core and ergonomic grip bar places hand in perfect punch position.
- Expandable polyurethane foam creates the ideal balance of air and foam for maximum Protection against injuries.
- Evercool mesh palm for moisture and temperature control during intense workouts.
- Hook-and-loop closure for highly customizable fit.
- Ergonomically secured thumb help prevent injuries.
- Polyester/nylon blended interior lining make for easy cleaning and maintenance



LEOPARD

SKU: P00002995 12oz

SKU: P00002996 14oz



ZEBRA

SKU: P00002999 12oz

SKU: P00003000 14oz



CAMO

SKU: P00002415 14oz

SKU: P00002416 16oz



CAMO

SKU: P00002791 12oz

SKU: P00002792 14oz

COACH MITTS



1910 LEATHER MINI MITTS

Layered-foam construction provides added comfort and cushions the hardest punches.
Easy slip-on, full-glove backing with adjustable hook- and-loopwriststraps.
Constructed of premium Mexican leather that provides long-lasting durability and functionality.
Handcrafted in Mexico for superior quality.

SKU: P00002120



EVERLAST EVERGEL MANTIS MITTS

EVERGEL™ MANTIS PUNCH MITTS
ENGINEERED FOR: MITT WORK

New state of the art gel material dissipates impact energy and protects hands during training.
Moisture absorbing and anti-microbial treatment prevents offensive odors, keeping your products smelling fresh.
New mesh back ensures breathability and comfort.
Mantis shape and new padded wrist support combine to provide superior hand safety and comfort.

SKU: 4416GL

Technologies: **EVERGEL™**



COACH MITTS



PUNCH MITTS

Lightweight EVERHIDE® material.
Thick foam padding for protection and shock-absorption.
Rear hand compartment for secure fit.

SKU: 4318 GY/BK

Technologies: EVERFRESH™



PUNCH MITTS

Lightweight EVERHIDE® material.
Thick foam padding for protection and shock-absorption.
Rear hand compartment for secure fit.

SKU: 4316 RD/BK

Technologies: EVERFRESH™



BOXING FITNESS KIT

Kit includes one pair of Punch Mitts and one pair of Neoprene Heavy Bag Gloves. Punch mitts feature synthetic polycanvas with improved design to increase functionality with full glove backing. Premium neoprene material, along with superior glove construction, provides durability and functionality. Mesh palm ensures breathability and comfort, while a moisture-absorbing and anti-microbial lining retains freshness and extends the life of your equipment. One size fits most. Machine washable gloves.

SKU: 3010



LEATHER PUNCH PADDLES

- Multi-layered, C3 FOAM™ padding absorbs strikes during training.
- Unique grip allows a trainer to feel less impact on the hand and wrist.
- Ideal for practicing various strikes and punches.
- Premium leather construction.
- Sold in pairs.

SKU: 2900000

TECHNOLOGY: C3 FOAM™



PROSPECT

START YOUR JOURNEY

PROSPECT



PROSPECT 2 BOXING KIT

DESCRIPTION

Built for boxing, kickboxing, MMA and martial arts, the Everlast Prospect 2 Youth Training Kit is built to keep your young athlete protected and performing at their best. This Kit includes the Everlast Prospect 2 Youth Boxing Glove and Prospect 2 Youth Punch Mitts.

Prospect 2 Youth Boxing Gloves

New improved glove design specifically tailored for younger hands
Synthetic leather construction
Multilayered foam padding
Ventilated mesh palms
Soft interior lining

Full wrist wrap hook-and-loop enclosure system
Thumb lock connection

Prospect 2 Youth Punch Mitts

Fits both adult and youth
Synthetic leather construction
Elastic finger loops
Padded heel and wrist strap
Curved professional level shape
Interior palm grip ball

SKU: P00003052 BLACK/GREY

SHELL 35LB BLK/GRY PROSPECT 2 11X30

Next generation heavy bag to match the new prospect boxing gloves

DESIGN FEATURES:

- The polycanvas material shell is durable & gives the bag a perfect beginner level performance for prospects.
- Premium jam & sand fill provides quality impact feedback & strike deadening
- Easy to hang 4-2-1 strap system with reinforced nylon to ensure strap longevity.
- Bottom bag anchor loop allows the use of ground tether or anchor for stabilization

SKU: P00003122 BLACK/GREY



PROSPECT II



BLACK / GREY



RED / GOLD

DESIGN FEATURES:

IMPROVED GLOVE DESIGN SPECIFICALLY TAILORED FOR YOUNGER HANDS
SUPPLE PU SYNTHETIC LEATHER SHAPES AND MOVES FOR GREATER ARTICULATION
MULTI LAYERED FOAM PADDING PROVIDES PROGRESSIVE PROTECTION FOR YOUNG HANDS
MESH PALM CREATES IMPROVED COOLING AND AIRFLOW
COMFORTABLE SOFT TOUCH LINING FOR CONFORMED, COMFORTABLE FIT
FULL WRIST HOOK & LOOP CLOSURE SYSTEM FOR WRIST SUPPORT
THUMB LOCK CONNECTION FOR SECURITY AND PROTECTION.

SIZE(S): 6OZ, 8OZ
YOUTH: (8-12) MARKET.

SKU: P00002971 6oz COLOR: Black / Grey

SKU: P00002972 8oz COLOR: Black / Grey

SKU: P00002973 6oz COLOR: Red / Gold

SKU: P00002974 8oz COLOR: Red / Gold

PROSPECT II



PROSPECT II YOUTH BOXING KIT

PROSPECT was designed to keep your young athlete protected and performing at their best. Built for boxing, kickboxing, MMA and martial arts. The Prospect Youth Boxing Kit includes 8oz Training Gloves & Punch Mitts designed with features & technology found in professional equipment and made of durable materials. Kit recommended for ages 5+.

SKU: P00003053 **COLOR:** Red / Gold



PROSPECT II YOUTH HEAVY BAG

The polycanvas material shell is durable & gives the bag a perfect beginner level performance for prospects.

Premium jam & sand fill provides quality impact feedback & strike deadening

Easy to hang 4-2-1 strap system with reinforced nylon to ensure strap longevity.

Bottom bag anchor loop allows the use of ground tether or anchor for stabilization

SKU: P00003124 **35LBS** **COLOR:** Red / Gold



HAND WRAPS



CORE 120" HANDWRAPS

DESCRIPTION

The Everlast Core Hand Wraps are made of a polyester-cotton blend, providing breathable comfort and safety during training. The thumb strap ensures ease of use with a hook-and-loop closure for a secure fit. It is recommended that hand wraps are always used under boxing or training gloves for optimal wrist and knuckle protection. These hand wraps are compact, measuring 2" x 120", and come in a set of two, one for each hand. They are machine washable.

Made of a polyester-cotton blend for breathable comfort and safety during training

Thumb strap with hook-and-loop closure for a secure fit

Recommended for use under boxing or training gloves for optimal wrist and knuckle protection

Compact size (2" x 120") and sold in a set of two (one for each hand)

Machine washable for easy cleaning and maintenance

SKU: P00003243 BLACK

SKU: P00003245 WHITE

SKU: P00003246 RED

SKU: P00003247 NAVY

SKU: P00003248 PINK

SKU: P00003250 PURPLE



ELITE 180" HANDWRAPS

SKU: P00003323 BLACK

SKU: P00003324 WHITE

SKU: P00003326 NAVY

SKU: P00003328 GREY

SKU: P00003329 GREEN



HAND WRAPS



1910 HANDWRAPS

Wrap your hands in 180" of history and luxury with the Everlast 1910 Hand Wraps. The most comfortable wraps on the market, the Everlast 1910 Hand Wraps are made from a cotton blend material that provides optimal breathability and the perfect stretch for a highly customizable fit. The ergonomic thumb loop and hook-and-loop enclosure allows for maximum adjustability and security. A modern take on a classic line, the Everlast 1910 Hand Wraps are a must have for any fight connoisseur.

Made from premium cotton blend fabric for stretchy gauze like feeling
Ergonomic thumb loop for a secure starting position
Hook-and-loop enclosure for customizable and secure fit
Classic black and white colorway with Everlast Authentic logo
Machine washable
Hand wraps should always be worn under gloves to help...

180
INCHES

SKU: P00002270 BLACK 180"



CORE HANDWRAPS 3-PACK

SKU: P00003251 BLACK WHITE RED

HAND WRAPS



120" HAND WRAPS

ENGINEERED FOR: HEAVY BAG WORKOUT, SPEED BAG WORKOUT, CARDIO STRIKE
120 inches of machine-washable poly-cotton blend keeps hands safe and wrists supported while training.

Thumb loop ensures ease of use; hook-and-loop closure ensures secure fit.

Compact 2" x 120" size.

Contains two 120" hand wraps, one for each hand.

Care instructions: machine wash, 100% cotton.

SKU: 4455	BLACK
SKU: 4455	RED
SKU: 4455	PINK
SKU: 4455	BLUE
SKU: 4455	PURPLE

120
INCHES



180" HAND WRAPS

ENGINEERED FOR: HEAVY BAG WORKOUT, SPEED BAG WORKOUT, CARDIO STRIKE
80 inches of machine washable cotton/spandex blend material provides breathable comfort and safety while training.

Thumb strap ensures ease of use with a hook and loop closure for a secure fit.

Anti-microbial treatment prevents offensive odors, keeping your products smelling fresh.

Care instructions: machine wash, 100% cotton.

SKU: 4456	BLACK
SKU: 4456	RED
SKU: 4456	BLUE
SKU: 4456	WHITE
SKU: 4456	BURGUNDY
SKU: 4456	GREY
SKU: 4456	PINK
SKU: 4456	GOLDEN

Technologies: **EVERFRESH™**

180
INCHES

HAND WRAPS



SPARK PRINTED HANDWRAPS

120" premium perfect stretch polyester woven fabric to ensure support and protection tapered thumb loop construction for a premium finish and unintrusive fit features a hook and loop closure system with woven end label provides maxziemburma adjustability and a secure closure.

SKU: P00002919 **LEOPARD**
SKU: P00002911 **GREEN CAMO**
SKU: P00002912 **GREY CAMO**

120
INCHES



108" PRINTED HAND WRAP

The use of the hand wrap provides protection to the muscles, articulations and tendons. The hand wrap provides comfort and safety while training.
Material: 80% cotton, 20% acrylic

SKU: P00001216

108
INCHES



PRO MMA 100" HAND WRAPS

ENGINEERED FOR: HEAVY BAG WORKOUT, THAI PAD WORKOUT
100 inches of machine-washable cotton/spandex blend material provides breathable comfort and safety while training.
Thumb loop ensures ease of use; hook-and-loop closure for a secure fit.
Anti-microbial treatment fights bacterial growth, keeping your products safe and smelling fresh.

SKU: 4453-RD

Technologies: **EVERFRESH™** **EVERCOOL™**

WRIST WRAPS



NEOPRENE WEIGHTED GLOVE

Constructed from neoprene, these gloves are built to last and for optimum fit. The anatomic wrist wrap helps to secure the gloves and provide wrist stability.

SKU: EVWG61052 **0.5KG X2**



PRINTED EVERGEL™ HANDWRAPS

ENGINEERED FOR: HEAVY BAG WORKOUT, REFLEX BAG WORKOUT, MITT WORKOUT
Keep your hands cool and protected during your next MMA training session with these EVERGEL™ hand wraps from Everlast®.

The EVERGEL™ material dissipates impact energy to protect your knuckles even in the most physical of workouts.

SKU: P00001248 **BLACK MEDIUM**

SKU: P00001249 **BLACK LARGE**

SKU: P00001250 **BLUE MEDIUM**

SKU: P00001251 **BLUE LARGE**

Technologies: EVERGEL™

PROTECTORS



BACK
VIEW :



COACH VEST

Premium leather construction for ultimate durability. Contoured, closed-cell C3 FOAM technology is designed with increased cushioning, support, and ultimate force dispersion to protect the torso and abdomen from powerful punches and lower body combinations. EVERDRITM wicking lining optimizes comfort and repels excessive moisture during training. Includes adjustable padded shoulder straps for secure placement and comfort.

SKU: 532001

Technologies:



EVERDRITM



C3 PRO KICK PAD

Multi-layered, dense C3 FOAM padding absorbs the heaviest kicks, knees, and strikes during training. Easy to maneuver for multiple target options. Premium leather construction for ultimate durability. Reinforced rivets and padded handles to withstand impact and sustain a secure grip. Dimensions: 24" x 18" x 5"

SKU: 712501

Technologies:



MMA PROTECTORS



THAI PADS

ENGINEERED FOR: MITT WORK, KICKING

Premium synthetic leather along with excellent glove construction, provides durability and functionality. Authentic Thai design features dense foam padding for safety while blocking kicks, punches, elbows and knees.

SKU: 7517



STRIKE SHIELD

Premium synthetic leather along with superior construction increases durability and functionality. Multiple straps increase shield functionality. High density foam for impact protection. Sold individually.

SKU: 7330B



ELITE 2 HEADGEAR

DESCRIPTION

The Everlast Elite 2 Head Gear is the ultimate choice for fighters and trainers seeking a balance of comfort, protection, and functionality. Its revolutionary design is optimized for a second-skin fit, with a unique top lace pattern that keeps the headgear in place while providing maximum adjustability. The face bar design utilizes a lightweight plastic insert to maximize protection, and the dual layer foam combination provides a low profile with a hard outer shell to deflect impacts. The integrated ear guard strap helps keep the ear inside the headgear and away from injuries, and the dual rear hook and loop straps and rear elastic pad provide a comfortable and secure fit. Designed for maximum functionality and safety, the Everlast Elite 2 Head Gear is perfect for training and sparring.

Revolutionary design optimized for a second-skin fit

Unique top lace pattern for maximum adjustability

Face bar design with lightweight plastic insert for protection

Dual layer foam combination for low profile and impact deflection

Integrated ear guard strap and dual rear hook and loop straps for secure fit

Rear elastic pad for comfort during wear

Designed for maximum comfort, protection, and functionality during training and sparring

SKU: P00003265 S/M BLACK

SKU: P00003266 L/XL BLACK

SKU: P00003267 S/M WHITE

SKU: P00003268 L/XL WHITE



1910 PRO HEADGEAR

Lightweight Foam provides a perfect balance of protection and movability Forehead / Crown guard with lace provides maximum adjustability for all head sizes without jeopardizing protection Hook & loop rear system provides a secure fit that's easy to slip on and off Buckle chin strap provides quick adjustment and a secure fit cheek guards designed to provide the most amount of coverage protection with the widest range of visibility Integrated ear protection secures the ear within the headgear without affecting the ability to hear

SKU: P00002118 **SIZE:** S/M
SKU: P00002119 **SIZE:** L/XL



ELITE HEADGEAR

Sparring head gear.
Premium synthetic leather.
Comfortable, dense foam padding

SKU: P00001211 **M L**

Technologies: EVERSHIELD™



MMA HEADGEAR

ENGINEERED FOR: SPARRING
Premium synthetic leather provides durability and functionality.
Antimicrobial treatment prevents offensive odors, keeping your products smelling fresh.
One size fits most.

SKU: 7420LXL

Technologies: EVERFRESH™



ELITE GROIN PROTECTOR

Contoured fitted cup for ultimate protection of the groin and hips.
 Dual-layer foam padding for added protection and comfort.
 Elastic leg strap for secure and comfortable fit during training.
 Elastic waist strap for flexibility during training and competition.
 Low profile, sleek design suitable for wear under or over boxing trunks.

-
- SKU:** P00003253 **SMALL**
 - SKU:** P00003254 **MEDIUM**
 - SKU:** P00003255 **LARGE**



PRO COMPETITION PROTECTOR

Flexible design offers increased mobility during competition. Dense, shock-absorbing C3 foam padding and cup provide maximum protection for the groin, hips, and kidneys. Premium leather construction provides lasting durability and functionality. EverDri wicking lining repels excessive moisture during training for comfortable wear. Adjustable hook & loop rear closure for secure placement while training.

-
- SKU:** 750001 **SMALL**
 - SKU:** 750201 **MEDIUM**



EVERDRI™



LIGHTWEIGHT SPARRING PROTECTOR

Flexible design allows fighter increased mobility during competition. Premium leather construction provides long-lasting durability and functionality. Features elastic waist band with adjustable hook-and-loop rear closure for secure placement and comfort during training.

-
- SKU:** 760001 **SMALL**
 - SKU:** 760401 **LARGE**



EVERDRI™

MOUTHGUARDS



SINGLE MOUTH GUARD

ENGINEERED FOR: SPARRING
Boil and bite design allows for custom molding of mouthguard to maximize protection & comfort.

SKU: 4405 CLEAR



DOUBLE MOUTH GUARD

ENGINEERED FOR: SPARRING
Boil-and-bite design allows for custom molding of mouth guard to maximize protection and comfort.
Center breath channel allows for unobstructed air flow.

SKU: 4410 BLACK

SKU: 4410 CLEAR



2 TONE SINGLE MOUTHGUARDS

ADULT SIZE

SKU: EVMG12T-OR/WT ORANGE / WHITE

SKU: EVMG12T-BL/WT BLUE / WHITE

SKU: EVMG12T-GN/WT GREEN / WHITE

JUNIOR SIZE

SKU: EVMG12TY-OR/WT ORANGE / WHITE

SKU: EVMG12TY-BL/WT BLUE / WHITE



2 TONE DOUBLE

ADULT SIZE

SKU: 44102T-ORWT NEON ORANGE / WHITE

SKU: 44102T-RYWT ROYAL BLUE / WHITE

SKU: 44102T-BKWT ROYAL BLUE / WHITE

MOUTHGUARDS



EVERGEL™ MOUTHGUARD

ENGINEERED FOR: SPARRING
Three layer mouth guard construction includes a soft gel inner layer, a shock absorbent Middle layer, surrounded by a more rigid outer shield for ultimate impact protection. Boil and bite design provides custom molds for a tight, comfortable fit. Includes plastic mouth guard case for clean and secure storage.

3 LAYERS OF PROTECTION



SKU: 1400008 BLUE / BLACK
SKU: 1400009 GREEN / GREY

Technologies: EVERSHIELD



EVERSHIELD DOUBLE MOUTHGUARD

ENGINEERED FOR: SPARRING
Three layer mouth guard construction includes a soft gel inner layer, a shock absorbent Middle layer, surrounded by a more rigid outer shield for ultimate impact protection. Boil and bite design provides custom molds for a tight, comfortable fit. Includes plastic mouth guard case for clean and secure storage.

2 LAYERS OF PROTECTION



SKU: 1400006 PINK
SKU: 1400004 GREY

Technologies: EVERSHIELD



EVERSHIELD SINGLE MOUTHGUARD

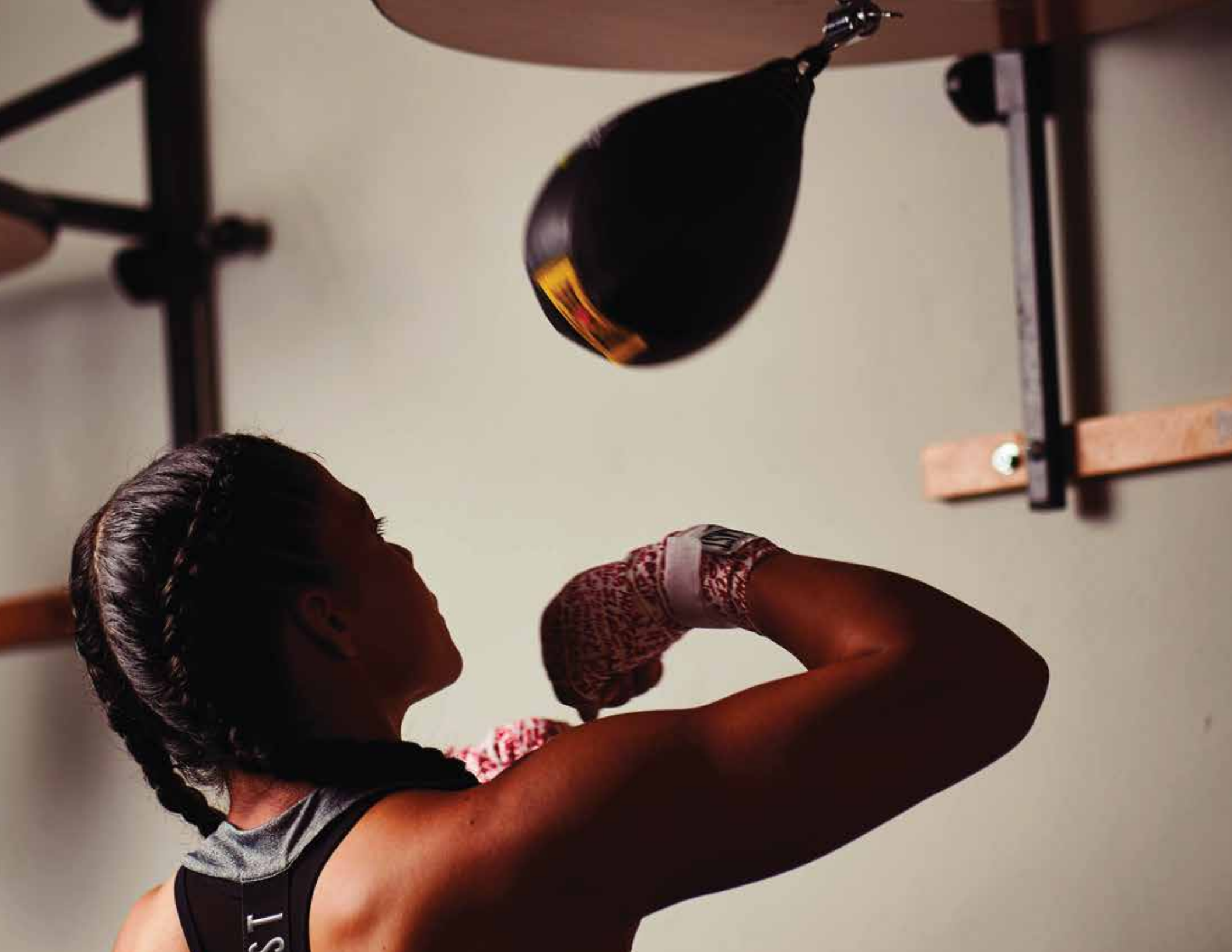
ENGINEERED FOR: SPARRING
Two layer mouth guard construction includes a shock absorbent inner layer surrounded by a more rigid outer shield for impact protection. Boil and bite design provides custom molds for a tight, comfortable fit. Includes plastic mouth guard case for clean and secure storage.

1 LAYERS OF PROTECTION



SKU: 1400003 RED
SKU: 1400002 PINK
SKU: 1400000 GREY

Technologies: EVERSHIELD



SPEED BAGS



ELITE SPEED BAG 9' x 6''

DESCRIPTION

Updated and optimized panel shape provides flatter in line travel allowing easier use for beginners.

FEATURES

- Replacement latex bladder that can be replaced in the event of a puncture
- Everlast panel design makes the speed bag ideal to perfect beginner mid level rebound performance
- Reinforced nylon webbing to improve durability and increase lifespan increased amount of cycles
- Balanced for accurate rebounds while training

SKU: P00003398 BLACK/GOLD



ELITE DOUBLE END BAG

DESCRIPTION

The classic everhide double end bag design with a new look.

FEATURES:

- Rivet-reinforced hanging straps to increase performance and durability
- Perfect for beginners and intermediate boxers
- Comes with 2 bungee cords and 2 ceiling/floor mount brackets
- Zipper-accessible latex bladder for easy bladder replacement
- Larger ball size is perfect for beginner to mid level training

SKU: P00003400

SPEED BAGS



EVERHIDE SPEED BAG

Premium synthetic leather, along with excellent construction, provides durability and functionality. Balanced for accurate rebounds while training.

SKU: 4241 M 9"x6"



EVERHIDE SPEED BAG

Premium synthetic leather, along with excellent construction, provides durability and functionality. Balanced for accurate rebounds while training.

SKU: 4215 MEDIUM



ADJUSTABLE SPEED BAG PLATFORM

Easily adjust speed bag platform to ideal height for any athlete. Platform includes swivel, two brace boards, assembly hardware, and full rubber edge binding for safety. Compatible with double-end bags and double-end anchor. Adjustable speedbag boxing platform for speed bag workouts. 8" adjustable in 1" increments. 24" Diameter x 1" pressboard.

SKU: P00003219



HEAVY BAGS



SKU: P00003165 80lb 107 cm RED **SKU: P00003155 80lb 107 cm BLACK** **SKU: P00003160 80lb 107 cm WHITE**
SKU: P00003166 100lb 122 cm RED **SKU: P00003156 100lb 122 cm BLACK**

POWERLOCK HEAVY BAG

Used Premium Fabric Reinforced Pvc Synthetic Leather With Heavy Duty Chain Style Hanging System (Chains, Swivel And Carabiners)
 Double Reinforced D-ring/nylon Strap Mounts For Increased Longevity And Durability.
 Double Reinforced Bottom Bag Anchor Allows The Use Of Ground Tether For Stabilization.
 Premium Jam & Sand Fill Provides Quality Impact Feedback And Strike Deadening.

Technologies: **POWERLOCK**



HEAVY BAGS



SHELL ELITE 2

DESCRIPTION

Sporting an updated nevatex texture and improved quieter performance for a more premium but durable feel.

FEATURES:

- Dual hanging strap system provides a quieter performance than the traditional chain system with two carabineers and a swivel for mounting
- Construction increases the durability and longevity of the heavy bag with the mounted d-ring and panel
- Ability to secure the bag with included bottom tie-down strap reducing movement
- Foam and sand filled to the desired weight
- Reinforced straps to ensure that the bag can withstand the fill weight

BLACK/GOLD	SKU:P00003418	70/80lb	13X40
BLACK/GOLD	SKU:P00003427	80lb	13x42
BLACK/GOLD	SKU:P00003419	100lb	13x46

BLACK/GOLD	SKU:P0000HB28-BK/GL	40lb	13x28
BLACK/GOLD	SKU:P0000HB34-BK/GL	60lb	13x34

BLACK/BLACK	SKU:P00003420	70/80lb	13X40
BLACK/BLACK	SKU:P00003421	100lb	13x40

BLACK/BLACK	SKU:P0000HB28-BK/BK	40lb	13x28
BLACK/BLACK	SKU:P0000HB34-BK/BK	60lb	13x34

WHITE/BLACK	SKU:P00003422	70/80lb	13x40
WHITE/BLACK	SKU:P00003423	100lb	13x46

RED	SKU:P00003424	80lb	13X40
RED	SKU:P00003425	100lb	13x46

RED	SKU:P0000HB28-RD	40lb	13x28
RED	SKU:P0000HB34-RD	60lb	13x34

HEAVY BAGS



SKU: P00001912-BL/SL 80LB
SKU: P00001913-BL/SL 60LB



SKU: P00001269 80LB



SKU: P00001259 100LB
P00001258 100LB

ELITE PROSTYLE HEAVY BAG

Heavy bagheavy bag is created with a specially blended filler mix of sanitized synthetic and natural fibers provides resilient shock absorbency.

Premium polycanvas material with reinforced webbing provides functionality and durability.

Heavy duty straps provide security and safety.

Double-end loop provides increased functionality & resistance.

Technologies: NEVATEAR™

HEAVY BAGS



SKU: P00001219 70LB



SKU: P00001262 70/80LB
SKU: P00001264 40LB
SKU: P00001217 100LB



SKU: P00001260-BL 70/80LB



SKU: P00001258-BL 100LB



SKU: P00001258-RD 100LB
SKU: P00001260-RD 70/80LB

ELITE PROSTYLE HEAVY BAG

Heavy bagheavy bag is created with a specially blended filler mix of sanitized synthetic and natural fibers provides resilient shock absorbency.

Premium polycanvas material with reinforced webbing provides functionality and durability.

Heavy duty straps provide security and safety.

Double-end loop provides increased functionality & resistance.

Technologies: NEVATEAR™

HEAVY BAGS - SMU



GREY

SKU: P0000HB34-GY	60lb	13x34
SKU: P0000HB40-GY	80lb	13x40
SKU: P0000HB46-GY	100lb	13x46

PINK

SKU: P0000HB28-PK	40lb	13x28
SKU: P0000HB40-PK	70lb	13x40

BLACK

SKU: P0000HB28-BK	40lb	13x28
-------------------	------	-------

RED

SKU: P0000HB28-RD	40lb	13x28
-------------------	------	-------

SHELL ELITE 2

DESCRIPTION

Sporting an updated nevatex texture and improved quieter performance for a more premium but durable feel.

FEATURES:

- Dual hanging strap system provides a quieter performance than the traditional chain system with two carabineers and a swivel for mounting
- Construction increases the durability and longevity of the heavy bag with the mounted d-ring and panel
- Ability to secure the bag with included bottom tie-down strap reducing movement
- Reinforced straps to ensure that the bag can withstand the fill weight



BLUE

SKU: P0000HB28-BL	40lb	13x28
SKU: P0000HB34-BL	60lb	13x34
SKU: P0000HB40-BL	80lb	13x40
SKU: P0000HB46-BL	100lb	13x46



NEVATEAR HEAVY BAG

ENGINEERED FOR: HEAVY BAG WORKOUT

Specially blended filler mix of sanitized synthetic and natural fibers provides resilient shock absorbency.

Premium NEVATEAR™ with reinforced webbing along with excellent construction provides durability and functionality. Heavy-duty straps provide security and safety, while the double-end loop provides increased functionality.

SKU: P00001454 80LB

Technologies: NEVATEAR™

HEAVY BAGS



C3 FOAM HEAVY BAG

Durable polycanvas wrap filled with closed cell foam technology provides increased cushioning and force dispersion while its resilient design maintains bag integrity. Specially blended filler mix of sanitized synthetic and natural fibers provides resilient shock absorbency. Premium NEVATEAR™ with reinforced webbing along with excellent construction provides durability and functionality. Heavy-duty straps provide security and safety, while the double-end loop provides increased functionality.

SKU: SH4768WB 100LB

Technologies: NEVATEAR™



POWERSHOT HEAVY BAG

ENGINEERED FOR: CARDIO BOXING WORKOUT
Strategically placed targets to generate powerful and precise head & body shots. Combination of C3 FOAM and EVERGEL Powershot cushioning targets to protect hands, knuckles and wrists. Specially blended filler mix of sanitized synthetic and natural fibers provides resilient shock absorbency. Premium NEVATEAR™ with reinforced webbing, along with excellent heavy bag construction, provides durability and functionality. Heavy-duty straps provide security and safety, while the double-end loop provides increased functionality.

SKU: SH6900RBWB 100 LB GEL

SKU: SH6908RBWB 80 LB GEL

Technologies:

EVERGEL™



HEAVY BAGS



NEVATEAR HEAVY BAG

ENGINEERED FOR: HEAVY BAG WORKOUT
Specially blended filler mix of sanitized synthetic and natural fibers provides resilient shock absorbency.
Premium NEVATEAR™ with reinforced webbing along with excellent construction provides durability and functionality. Heavy-duty straps provide security and safety, while the double-end loop provides increased functionality.

SKU: SH4007WB **80 LB**

SKU: SH4007WB-PK **80 LB**

Technologies: NEVATEAR™



HEAVY BAG

ENGINEERED FOR: HEAVY BAG WORKOUT
Specially blended filler mix of sanitized synthetic and natural fibers provides resilient shock absorbency.
Premium NEVATEAR™ with reinforced webbing along with excellent construction provides durability and functionality. Heavy-duty straps provide security and safety, while the double-end loop provides increased functionality.

SKU: P00000342 **40 LB 12"X28"**



1910 HEAVY BAG

ENGINEERED FOR: HEAVY BAG WORKOUT
Specially blended filler mix of sanitized synthetic and natural fibers provides resilient shock absorbency.
Premium NEVATEAR™ with reinforced webbing along with excellent construction provides durability and functionality.
Heavy-duty straps provide security and safety, while the double-end loop provides increased functionality.

SKU: SH1910WB **100 LB**



HYDROSTRIKE AIR CORE HEAVY BAG, 100LBS

The Everlast Hydrostrike Air Core Heavy Bag is the next generation Everlast Hydrostrike bag.

Combining the versatility of water and air this bag can be set up and taken down with ease. Individual inner air compartment creates a traditional heavy bag shape while the outer water compartment provides an adjustable weight up to 100lbs with optimal...

.....
SKU: P0002820 **100LB Color:** Black



MMA HEAVY BAGS



MMA POLYCANVAS HEAVY BAG

Specially blended filler mix of sanitized synthetic and natural fibers provides resilient shock absorbency. Premium polycanvas along with excellent heavy bag construction provides durability. Heavy-duty straps provide security and safety, while the double-end loop provides increased functionality. 40" high.

SKU: MMA4657WB - BK **70LB**
MMA4657WB - RD **70LB**



OMNISTRIKE™ HEAVY BAG

C3 FOAM wrapped bottom panel sustains low kicks and ground and pound. Knee Strike handles simulate the Thai clinch while training. Premium synthetic leather along with superior punching bag construction increases durability and functionality. Ideal for heavy bag workouts and ground & pound. Weighs 80lbs; approximately 49" in height with a 15.5" diameter. Not recommended for outside use.

SKU: SHMMA4788WB **80LB**
Technologies: NEVATEAR™
C3 FOAM



TEARDROP HEAVY BAG

Authentic Muay Thai teardrop shape provides a lower gravitational pull on the bag making it ideal for knee strikes and clinches. Triple stitched panel construction Durable

SKU: SH4765WB **65LB**

HEAVY BAGS



M. HOOK BAG

Includes triple-reinforced ring tabs to ensure maximum toughness and heavy bag durability at the top of the bag.
Complete with chain.

SKU: SH270001 50 LB



STANDS



HEAVY BAG STAND

ENGINEERED FOR: HEAVY BAG WORKOUT

Heavy duty, powder coated steel tubing combined with 3 weight plate pegs for maximum strength and durability. Easy to assemble and will accommodate any heavy bag up to 100 lbs. Footprint: 69" L x 48.25" W; 84.13" tall.

SKU: 4812G



HEAVY BAG / SPEED BAG STAND

ENGINEERED FOR: HEAVY BAG WORKOUT

Heavy duty, powder coated steel tubing combined with 3 weight plate pegs for maximum strength and durability. Easy to assemble and will accommodate any heavy bag up to 100 lbs. Adjustable height speed bag platform handles all speed bag sizes. Footprint: 69" L x 48.25" W; 84.13" tall.

SKU: 4813EV



DUAL STATION HEAVY BAG STAND

With the same approachable feel of the single heavy bag stand but with the addition of another bag hang point for an increased variety of options for your next workout.

FEATURES:

- Easy assemble bags sold separately
- Rugged, powder coated steel tubing construction provides a foundation that will hold up to 100lb bags with optional weight pegs to help hold the stand in place.
- Requires some assembly, includes all needed hardware
- Triangular base allows for the stand to be easily located in a corner

SKU: P00003395 **GREY**

ACCESORIES



UNIVERSAL HEAVY BAG HANGER

Rubberized interior surface prevents sleeve rotation.
Embedded steel supports increase stability and heavy bag strength.
Heavy-duty nylon straps provide security and safety.

SKU: 4683



HEAVY BAG BRACKET WITH PULL UP BAR

ENGINEERED FOR: HEAVY BAG WORKOUT
Heavy duty, powder-coated steel
Dual mounting system for easy wall attachment easy installation
Pull-up station more than just a heavy bag hanger, it features a pull up bar
For chin ups that is 1 1/4" in diameter for a comfortable grip and a more complete workout.

MAXIMUM WEIGHT CAPACITY
120KG
270LB

SKU: EVHB7R204



WOOD BEAM HEAVY BAG HANGER

Solid steel material ensure safety and stability when hanging up your heavy bag.
360° rotation for full range of movement.
Powder-coated steel for superior durability.
Wood screws included for easy attachment to wood beams.

SKU: 4680U



EVERLAST TARGET FREESTANDING PUNCHBAG

ENGINEERED FOR: HEAVY BAG WORKOUT

High density plastic base is easily filled with water or sand for stability.

Absorbs powerful punches.

Closed cell foam technology in the bag provides durability and hand comfort.

Full sized heavy bag with targets for full power punches, kicks, knees and elbows.

Unique target concept design to coordinate your workout and challenge yourself with the target zones for accuracy.

Approx. 360 lbs. When filled with water; 153 cm. tall.

SKU: 2168

Technologies: EVERFLEX™

FREESTANDING BAGS



EVERLAST TARGET FREESTANDING PUNCHBAG

ENGINEERED FOR: HEAVY BAG WORKOUT

High density plastic base is easily filled with water or sand for stability. Flexible neck allows bag to absorb powerful punches while reducing base movement. Closed cell foam technology in the bag provides durability and hand comfort. High grade shock absorbing foam with protective outer layer for lasting durability. Approx. 240 lbs. When filled with water; 70" tall at highest setting.

SKU: 2240

Technologies: EVERFLEX™



POWERCORE FREE STANDING HEAVY BAG

Air-foam chamber provides realistic feel. Rounded design allows for easy movement around target increasing cardio, leg conditioning & Powercore power transfer ring absorbs impact and reduces base movement and sliding. High density base can easily be filled with water or sand (approximately 250 lbs. With water, 370 lbs. With sand) Solid base provides easy-to-hit target, maximizing your workout. Height is adjustable from 54" to 65". Not recommended for outside use.

SKU: P0001266

Technologies: POWERLOCK

FREESTANDING BAGS



EVERFLEX FITNESS FREESTANDING HEAVY BAG

ENGINEERED FOR: HEAVY BAG WORKOUT

High density plastic base is easily filled with water or sand for stability.

Flexible neck allows bag to absorb power punches while reducing base movement.

Closed cell foam technology in the bag provides durability and hand comfort.

Sit-up loop and resistance bands are included to allow you to use the freestanding bag for a full body workout.

Approx. 160 lbs. When filled with water; 67" Tall at highest setting.

SKU: 2226
SKU: 2226B

Technologies: EVER FLEX™



INFLATABLE TOWER BOXING BAG

The inflatable tower offers a variety of challenging workouts. Helps improve coordination and flexibility, allows you to burn calories and stress.

It rocks back and forth with each hit, creating an instant movement that increases resistance and sharpens reflexes.

Includes leak-proof foot pump and base, with water charge that fills directly from the tap.

Made of sturdy PVC material; Folds up for storage when not in use.

SKU: P0003613



FREESTANDING BAGS



HYPERFLEX™ STRIKE BAG

Punch-bag design allows for easy movement around target, increasing cardio, leg conditioning, and hand-eye coordination. Dual HYPERFLEX™ individual locking springs provide three workout settings for comprehensive punching, reflex, and cardio workouts. SPEED FLEX — [Lock Base, Unlock Neck] Setting is best for improving fast punches, combinations, and reflexes. High-density plastic base. Approx. 70 lbs when filled with water. 63" tall at highest setting.

SKU: 2264G

Technologies: EVERFLEX™



ELITE HYPERFLEX WITH ARM

DESCRIPTION

The Everlast Elite Hyperflex Bag is the ultimate tool for improving cardio, leg conditioning, and hand-eye coordination. Its unique design allows for easy movement around the target, making it perfect for advanced training sessions. The bag also features a removable swing bar for even more versatility in your training routine. The Elite Hyperflex bag has a dual locking spring design, allowing you to customize the way it performs. The base of the bag can be filled with either sand or water to keep it sturdy during training. The mid-sized foam ball is the perfect size and firmness for advanced target training. The bag is easy to assemble and comes with an Allen key for quick setup. Design allows for easy movement around the target, increasing cardio, leg conditioning, and hand-eye coordination.

SKU: P00003439

Adjustable height from 150 cm to 174 cm



TITAN

MMA TRAINING GEAR

EVERLAST MMA

MOST EFFECTIVE TACTICS AVAILABLE



TITAN PRO STRIKING SHINGUARDS

PROFESSIONAL LEVEL STRIKING SHINGUARD

Raised foam protection on high impact areas.
 Precurved shin pad wraps around the leg to provide high levels of protection on sides of calf.
 Foam extension wings to protect the sides of the ankle
 Twin turn back straps with reinforced loops to provide a secure fit.
 Silicone grip on inside lining to help secure the pads in place during use.

SKU: P00003212 M

SKU: P00003213 L



TITAN PRO INSTEP SHINGUARDS

PROFESSIONAL LEVEL INSTEP SHINGUARD

Articulated 3-piece design provides unrestricted movement with high levels of protection.
 precurved shin pad wraps around the leg to protect the sides of calf.
 the peaked outer on the shin guard helps protect the vital outer knee from injury.
 middle pad protects the vulnerable ankle & joint
 compression style sleeve with hidden elastic adjuster secures the pad in place.

SKU: P00003208 M

SKU: P00003209 L



TITAN KICK SHIELD

DESCRIPTION

An updated rear strap design; lightweight, dependable, and with maximum impact absorbant build, it is ideal for a variety of low leg kicks. Sold individually.

FEATURES:

- Side eyelet allows for foam airflow during impact compression, allowing accelerated reform of foam
- Single layer high density foam for a lightweight design that provide
- The optimum impact absorption webbing reinforced dual rear handle that provides for a secure holding position.

SKU: P00003257



TITAN INSTEP SHINGUARDS

Tube knitted sock style construction provides maximum stretch and a secure fit.

Ergonomic position heel hole provides a comfortable fit. Low profile dual zone foam provides maximum protection and mobility.

Top elastic band with silicone reduces the chance of movement during use.

.....
SKU: P00002906 S/M

SKU: P00002907 L/XL



MMA EQUIPMENT



TITAN HEADGEAR

Training boxing helmet made of durable synthetic leather. Multi-layered foam provides progressive protection for the entire head. Cheekbone protection does not interfere with good visibility. The helmet design with chin guard is essential for active training and sparring with maximum contact. The universal size of the helmet is provided by a system of straps and Velcro fasteners.

SKU:P00003101



TITAN MMA GLOVE

Traditional MMA glove silhouette, perfect for grappling or striking layered foam padding on the knuckles provides advanced protection open palm design maintains full range of motion. Foam padded lining improves comfort and fit. Hook & loop strap system for maximum wrist support.

SKU:P00003011 S/M
SKU:P00003012 L/XL



TITAN PRO MMA GLOVES

Shaped foams promote proper hand form to help reduce the risk of injury. Full grain leather outer provides maximum durability. Elastic base hook & loop wrist strap provides a secure & comfortable fit.

SKU:P00003175 M
SKU:P00003176 L

MMA EQUIPMENT



TITAN MMA GRAPPLING GLOVES

Advanced synthetic leather gives high levels of durability
Layered foam provides progressive protection.
Padded thumb and lower hand adds additional protection.
Structured finger loops ensure a secure fit and enhanced glove control.
Open palm design maintains full range of motion.
Foam padded lining improves comfort and fit.
Hook & loop strap system for maximum wrist support.

SKU:P00003111 S/M
SKU:P00003112 L/XL



TITAN HYBRID GLOVES

Thick Padding Over The Knuckles Promotes Proper Form & Helps Avoid Hand Injuries.
Padded Thumb Provides Additional Protection.
Hook & Loop Strap Provide A Quick And Easy Solution To Achieve A Secure Fit.

SKU:P00003099 S/M
SKU:P00003100 L/XL



CORE



MMA GLOVES



CORE EVERSTRIKE GLOVES

Designed to be a true cross function glove; strike, lift, push, jump rope, drink and interact with your device all without removing or changing gloves thick knuckle padding for protection during striking durable microfiber palm with ventilation for abrasion protection during lifting double wrap, compression closure strap provides wrist protection and support quickly banish sweat during the hard workouts with the towel thumb high flex panel allows better articulation and fit finger pull tabs make removing the gloves easy even when sweaty.

SKU: P00002938 M BLACK

SKU: P00002939 L BLACK

SKU: P00002947 M BLUE

SKU: P00002948 L BLUE

SKU: P00002944 M RED

SKU: P00002945 L RED

SKU: P00002941 M WHITE

SKU: P00002950 M PINK

CORE KICKBOXING GLOVES

Multipurpose glove.
Durable multi-layered knuckle padding and padded thumb.
Interior ergonomic grip bar.
Ventilated mesh palms.
Integrated easy-off finger pull tabs.



SKU: P00002933 SM

SKU: P00002934 LXL

MMA GLOVES



TRAINING STRIKING GLOVES

Premium synthetic leather provides long lasting durability and functionality. Full wrist wrap strap provides superior wrist support and allows for a more customizable fit. Better design with refined padding provides a more ergonomic fist shape for improved knuckle protection. Used for sparring, mitt work, and ground and pound.

SKU: 7773 - S / M / L / XL

Technologies: EVERFRESH™



MMA GRAPPLING GLOVES

Premium synthetic leather provides long lasting durability and functionality. Full wrist wrap strap provides superior wrist support and allows for a more customizable fit. New design with refined glove shape for improved finger flexibility and hand protection. Articulated finger ridges for ease of movement. Used for grappling and mitt work.

SKU: 7560 PINK / BLACK / BLUE / RED EVERFRESH™
TALLA: SM - L XL



EVERSTRIKE MULTI-PORPUSE GLOVE

Training Gloves are versatile gloves ideal for MMA training that allows easy transition from cardio workouts to heavy bag training or mitt work. Made of premium synthetic leather and cushioned foam that dissipates the impact of strikes, keeping your hands and knuckles safe. The reinforced fifth metacarpal padding minimizes hand trauma. Features: Made of premium synthetic leather EverCool ventilation system EverDri keeps hands dry and comfortable Foam padding and reinforced fifth metacarpal Ideal for MMA training available in 4 color combinations and sizes M/L, L/XLs

SKU: P0000661 WHITE / GOLD S/M
SKU: P0000662 GREY / BLACK M/L - L/XL
SKU: P0000663 BLACK / GOLD M/L - L/XL

EVERDRI™
EVERCOOL™



MMA KICKBOXING GLOVES

Full wrist wrap strap provides superior wrist support and allows for a more customizable fit. Full mesh palm ensures breathability and comfort. New MMA glove design with extended knuckle padding protects fingers while training, with synthetic leather construction for durability. Ideal for heavy bag workouts and Thai pad workouts. 5 OZ.

SKU 4402B EVERCOOL™ EVERFRESH™

MARTIAL ARTS PROTECTORS



COMPETITION HOGU

Reversible blue and red hogu
Contoured shape enables freedom of
Movement without compromising safety.
Competition hogu chest protector.
Safeguards top of shoulder.
Adjustable belts.

SKU: EVTC3P400

COLOR: Blue / White - Red / White

00 / 2 / 3 / 4

MARTIAL ARTS PROTECTORS



HAND PROTECTOR

Strong dipped foam for greater shock absorption.
Contour design to fit the hand comfortably.
Full-finger coverage for added protection.
Adjustable hook/loop closure.
We use quality raw material for the manufacturing of these gloves.
That ensures better ventilation and comfort to the wearer.



SKU: EVTP3P201 **COLOR:** Black
SKU: EVTP3P202 **COLOR:** Red
SKU: EVTP3P203 **COLOR:** Blue
YS / YM / YL / S / M / L



HEADGEAR

The Everlast headgear offers excellent flexibility and movement and is well ventilated for better comfort.
Available in three colors: black, red and blue.
Sized to fit for children and adult.
High-quality foam headgear.
Ear-release canals for added protection to eardrums during sparring.
Protects the top of the head while also allowing heat to escape.
Provides air flow throughout the headgear.



SKU: EVTH3P001 **COLOR:** Black
SKU: EVTH3P002 **COLOR:** Red
SKU: EVTH3P003 **COLOR:** Blue
XS / S / M / L



SHIN GUARD

Strong dipped foam for greater shock absorption.
Contour design for superior fit and ventilation.
Adjustable HOOK/LOOP closure.



SKU: EVTS3P101 **COLOR:** Black
SKU: EVTS3P102 **COLOR:** Red
SKU: EVTS3P103 **COLOR:** Blue
YM / YL / S / M / L



HI-TOP BOOTS

Strong dipped foam for greater shock absorption.
its left and right foot.
enforced bottom strap.
we use quality raw material for the manufacturing of these boots that
Ensures better ventilation and comfort to the wearer.



SKU: EVTB3P301 **COLOR:** Black
SKU: EVTB3P302 **COLOR:** Red
SKU: EVTB3P303 **COLOR:** Blue
YS / YM / YL / S / M / L



JIU JITSU



JIU JITSU GI

TOP QUALITY 100% COTTON, UNIFORM COMFORTABLE AND EASY TO CARE FOR

Reinforced with Double-Stitching Throughout Jacket and Pants. Designed with 550-gm Gold Spec-Weave Material and 12oz Twill Cotton for Superior Strength and Durability. Lightweight for Ultimate Maneuverability. Traditional Branded Patch Detailing.

MTS	1.55 a 1.62	1.60 a 1.72	1.70 a 1.82	1.80 a 1.91	1.89 a 1.96
KG	51 a 60	57 a 65	65 a 80	80 a 94	92 a 116
TALLA	1	2	3	4	5

SKU: EVJJ5L001

COLOR: Blue

SIZE 1

SKU: EVJJ5L003

COLOR: Blue

SIZE 3

SKU: EVJJ5L004

COLOR: Blue

SIZE 4

SKU: EVJJ5L005

COLOR: Blue

SIZE 5

SKU: EVJJ5L811

COLOR: White

SIZE 1

SKU: EVJJ5L813

COLOR: White

SIZE 3

SKU: EVJJ5L814

COLOR: White

SIZE 4

SKU: EVJJ5L815

COLOR: White

SIZE 5



JIU JITSU BELTS

100% COTTON BELTS.
SUPERIOR COTTON FOR MAXIMUM DURABILITY.
THICKER THAN THE AVERAGE MARTIAL ARTS BELT.
EACH BELT COMES WITH GRADING BAR FOR STRIPES.
ESPECIALLY MADE FOR JIU JITSU GIs.

A1 A2 A3 A4

SKU: EVJJB5L01 COLOR: White
SKU: EVJJB5L02 COLOR: Blue
SKU: EVJJB5L04 COLOR: Brown

AVAILABLE BELTS



KARATE



- SKU: EVKU7140
- SIZE 0000
- SKU: EVKU7130
- SIZE 000
- SKU: EVKU7120
- SIZE 00
- SKU: EVKU7110
- SIZE 0
- SKU: EVKU7102
- SIZE 2
- SKU: EVKU7103
- SIZE 3
- SKU: EVKU7104
- SIZE 4
- SKU: EVKU7105
- SIZE 5
- SKU: EVKU7106
- SIZE 6
- SKU: EVKU7107
- SIZE 7

KARATE UNIFORMS

Top quality 100% cotton, uniform comfortable
And easy to care for double line, reinforced
stitching on the collars and cuffs
Inset panels on jacket for greater durability
Double-layered fabric at shoulders
Bound side vents with tie cords
Crotch gusset with triangular inseam inserts
Elastic drawstring waist



KARATE BELT

Traditional and versatile, this polyester/cotton
middleweight, double-wrap belt includes seven
rows of stitching. Width: 1.75"

SKU: EVKB7420

COLOR:



MATERIALS: 100% COTTON

ACCESORIES



F.I.T. SHADOW BOXER

The F.I.T. Shadow Boxer is designed to help develop speed, power, and explosiveness for boxing, MMA, and all fight sports. Designed with foam-covered back support and handles for safety and comfort, and double-resistance tubes to help increase strength in arms and shoulders.

SKU: P00000789



BATTLING ROPES

ENGINEERED FOR: TOTAL BODY CONDITIONING, STRENGTH, CARDIOVASCULAR TRAINING
Improved grip strenght 1.5" diameter x 45' lenght rope. Durable synthetic blend with rubberized handles.

SKU: EVBR9W623



LOWER BODY POWER BANDS

ENGINEERED FOR: LATERAL RESISTANCE, LOWER BODY STRENGTH TRAINING, IMPROVING FOOTWORK
Two padded hook-and-loop ankle straps provide comfort and Stability during training.
Removable gray elastic band designed to discipline footwork and Athletic stance provides resistance up to 25 lbs
Removable red elastic band, designed to strengthen knee strikes And kicks, provides resistance up to 15 lbs.

SKU: 6350RG

ACCESORIES



WEIGHTED JUMP ROPE

ENGINEERED FOR: SPEED, ENDURANCE, AGILITY, COORDINATION, TOTAL BODY CONDITIONING

Perfect for fitness workouts, cardio training, jumping exercise, CrossFit, Skipping, speed training, calves, thigh and forearm strengthening, leg training and endurance training. Ergonomically design weighted memory foam handles offer extra comfort while also preventing palm sweat and providing a firm grip.

Weights in jump rope handles are removable.

SKU: EVJROW38W



EVERGRIP WEIGHTED JUMP ROPE

ENGINEERED FOR: SPEED, ENDURANCE, AGILITY, COORDINATION, TOTAL BODY CONDITIONING

Adjustable length, 9 ft. plastic speed rope.

EverGrip™ handles provide added grip while training. Removable weights to challenge your cardio and upper body training.

1.5 lbs. maximum removable weights

Precision ball bearing rotation for increased speed.

SKU: 4485



DOUBLE-END ANCHOR

Stabilize your heavy bag with 45 lbs. of water. Bungee cord included. Premium synthetic leather with reinforced webbing provides long lasting durability and functionality.

Also can be used for double-end striking bags.

SKU: DE01



GLOVE BAG

Durable drawstring bag comfortably holds any size training gloves. Features front pocket for hand wraps or mouth guard and a mesh water bottle holder. Combines Everfresh antimicrobial and Evercool ventilation technologies to prevent odor causing bacterial growth on training gear. Comes packaged on a hang card.

SKU: 420D

EVERCOOL™ EVERFRESH™

KEY CHAIN



SKU:700000 -BK
COLOR: Black



SKU:700000 -BL
COLOR: Blue



SKU:700000 -RD
COLOR: Red



SKU :700000 -PK
COLOR: Pink



PROFESSIONAL BOOTS



BLACK



NAVY



WHITE



RED

PRO ELITE HIGHT TOP

Everlast & Michelin collaborated hybrid boxing shoe.
Hi-top design for both casual and athletic use.
100% Michelin rubber sole for premium comfort and durability.
Rubber sole and open-weave mesh construction provide comfort and durability while minimizing weight.
Men's sizing.
No Half Sizes.

SKU: P00003258

EU 6 7 8 9 10 11 12 13

OPEN SIZE

PROFESSIONAL BOOTS



POWERLOCK X-TRAINER

The Everlast Powerlock X-Trainer Boxing Shoes are designed with the serious athlete in mind. These mid-height shoes are engineered to provide optimal support and comfort during training and competition. The high-quality sole features a soft core design for impact absorption, while the dual turn-back strap system allows for easy on and off and a secure fit. The Powerlock X-Trainers are versatile enough for use both in the ring and for roadwork, with a full mesh body for maximum airflow and a lightweight design. The molded hook and loop tape ensures maximum durability and longevity. Whether you're an amateur or a professional, these shoes are an essential part of your training equipment.

FEATURES:

- Mid-height design for a comfortable, supportive fit
- High-quality sole with soft core for impact absorption and comfort
- Dual turn-back strap system for easy on and off and secure closure
- Versatile design allows for use in and out of the ring, including for roadwork
- Full mesh body for lightweight design and maximum airflow

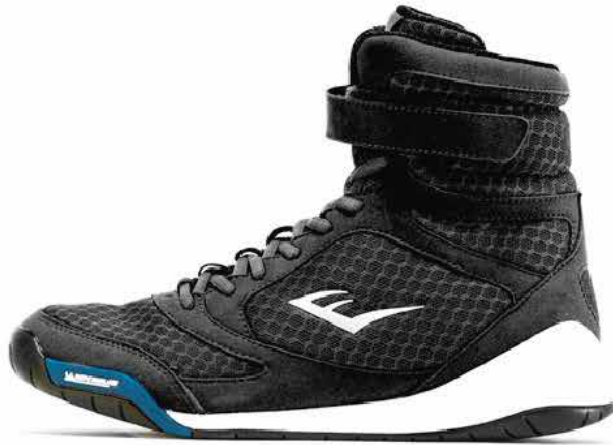
SKU: P00003410 BK
SKU: P00003410 WT
SKU: P00003410 YW
SKU: P00003410 RD



EU 6 7 8 9 10 11 12 13

OPEN SIZE

PROFESSIONAL BOOTS



BLACK



BLUE



RED

PRO ELITE HIGHT TOP

Everlast&Michelincollaboratedhybridboxingshoe.
 Hi-topdesignforbothcasualandathleticuse.
 100%Michelinrubbersoleforpremiumcomfortanddurability.
 Rubbersoleandopen-weavemeshconstructionprovide
 comfortanddurabilitywhileminimizingweight.
 Men'ssizing.
 NoHalfSizes.

SKU: P00001075

EU	7	8	9	10	11	12
BR	38	39	40	41	43	44
	1	2	3	2	2	1

PROFESSIONAL BOOTS



ULTIMATE

Rubber outsole: increased grip, durability and stability.
 Optimized comfort with anatomical designed insole.
 Bonded insole to prevent slipping.

SKU: ELM-94B BRANCO
 SKU: ELM-94E PRETO/ DOURADO

EU	6.5	7.5	8.5	9	10	10.5	11
BR	37	38	39	40	41	42	43
	1	1	2	3	2	2	1



PIVT LOW TOP

A lightweight low top boxing shoe engineered with the understanding that footwork is everything. Constructed with high quality Michelin® Technical Sole, open weave mesh, microfiber and suede to create the perfect formula for speed, comfort and durability. The versatile hybrid design allows athletes to seamlessly transition from gym to canvas for...

SKU: P00001076 BLACK

EU	7	8	9	10	11	12
BR	38	39	40	41	43	44
	1	2	3	2	2	1



BOXING & MMA

PARA MAYOR INFORMACIÓN COMUNÍQUESE
CON SU EJECUTIVO DE VENTAS

DEPORTES JIMMY CR S.A

AN AUTHORIZED LICENSEE OF EVERLAST WORLDWIDE INC,

Ofibodegas Capri, Bodega #20, de Multiplaza Escazú, 1 km al norte,

contiguo al Colegio Blue Valley. Guachipelín.

San José. Costa Rica

T: (506) 2215 1578 / 2215 1745

C: ventascr@djimmy.net

WWW.EVERLASTLATAM.COM



EVERLASTLATINO
EVERLAST.CR